

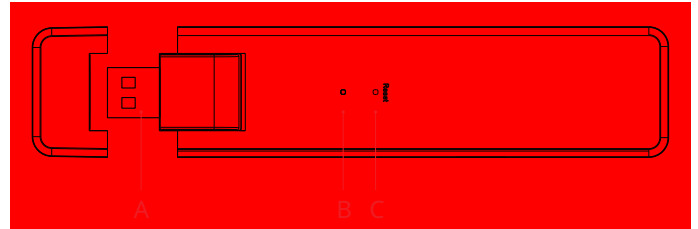


Important:

DTU-Lite-S(Wi-Fi) is only compatible with Hoymiles new HMS and HMT series of microinverters.

1. Interface Layout

Item	Description
A	USB Connector
B	Status Indicator
C	Reset Button



2. Installation

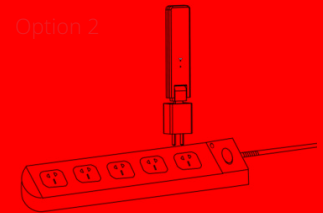
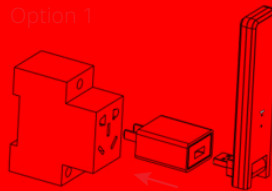
A) Check the box for the following items:

- ✓ Hoymiles DTU-Lite-S(Wi-Fi)
- ✓ Adapter

B) Power the DTU-Lite-S(Wi-Fi)

Option 1: Connect the DTU to the adapter and plug it into a wall socket

Option 2: Connect the DTU to the adapter and plug it into the power strip.



Note:

1. Please make sure that it is placed at least 0.5 meters above the ground, and try to install the DTU at a 90 degrees angle perpendicular to the ground.
2. To prevent signal attenuation, please do not install the DTU directly above metal or concrete.

3. Online Setting

A) Plug in the power adapter to energize the DTU. Once the DTU powers on, the red, green and blue lights will flash for one second in turn for 30 seconds.

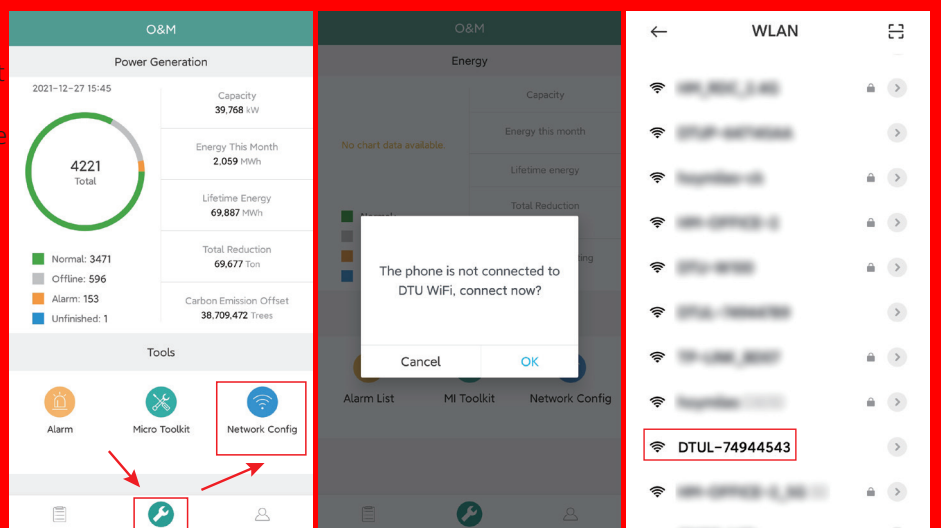
B) Download the Hoymiles mobile installer App.



C) Use the App to connect to the DTU:

Open the Installer App on smart phone/tablet and log in. Click "O&M" at the bottom of the page and then click "Network Config".

Select the DTU's wireless network and click "Connect". (The network name of the DTU consists of DTUL and product serial number, and is not password-protected by default.)



D) Set up with Internet

When the connection is successful, click "Network Config" again and enter the Network Config page.

Select the router Wi-Fi and enter the password.

Click "Send to DTU".

The network configuration takes about 1 minute, please be patient.

If the network is not connected, please check the internet as instructed.

Check the indicator light of DTU when the connection is successful (green light shall remain on).

Note: If your configuration page is inconsistent with the above, please update the DTU firmware to the latest version.

4. Installation Map

Please complete the installation map.

A) Peel the serial number label (as circled below) from the DTU and affix it to the installation map.

B) Complete system information of the installation map as shown on the right.

5. MI Toolkit

MI Toolkit is one of the toolkits that come with S-Miles Cloud App. It can be used for on-site inspection after the PV power station is complete, so that the operation of microinverter can be monitored without Site Creation.

For more operation details regarding MI Toolkit, please refer to "User Manual for DTU-Lite-S(Wi-Fi)".

6. Warning

Please complete the online account creation to complete the DTU installation (refer to "Quick Installation Guide for S-miles Cloud Online Registration" for detailed account creation steps).

⚠ Warning

- Only qualified personnel can install or replace the DTU.
- Do not attempt to repair the DTU by yourself. If the DTU breaks down, please contact your distributor for maintenance. Disassemble the DTU without permission will invalidate the warranty.