

Hi-MO X10 Scientist

LR7-54HVD

475~495M

**Bifacial
Power Generation**



Advanced:

TOP Efficiency,+5% Power,More Yield.



Value-Added:

A+ Anti-Shading,Less Loss.



Aesthetic:

No Gridlines,Scenario Integration.



Safe:

Prevent Overheating,Lower temperature under shade 60°C+² compare with conventional modules

Complete System and Product Certifications

IEC 61215,IEC 61730

IEC62941:Guideline for module design qualification and type approval

ISO9001:Quality Management System

ISO14001:Environment Management System

ISO45001:Occupational Health and Safety

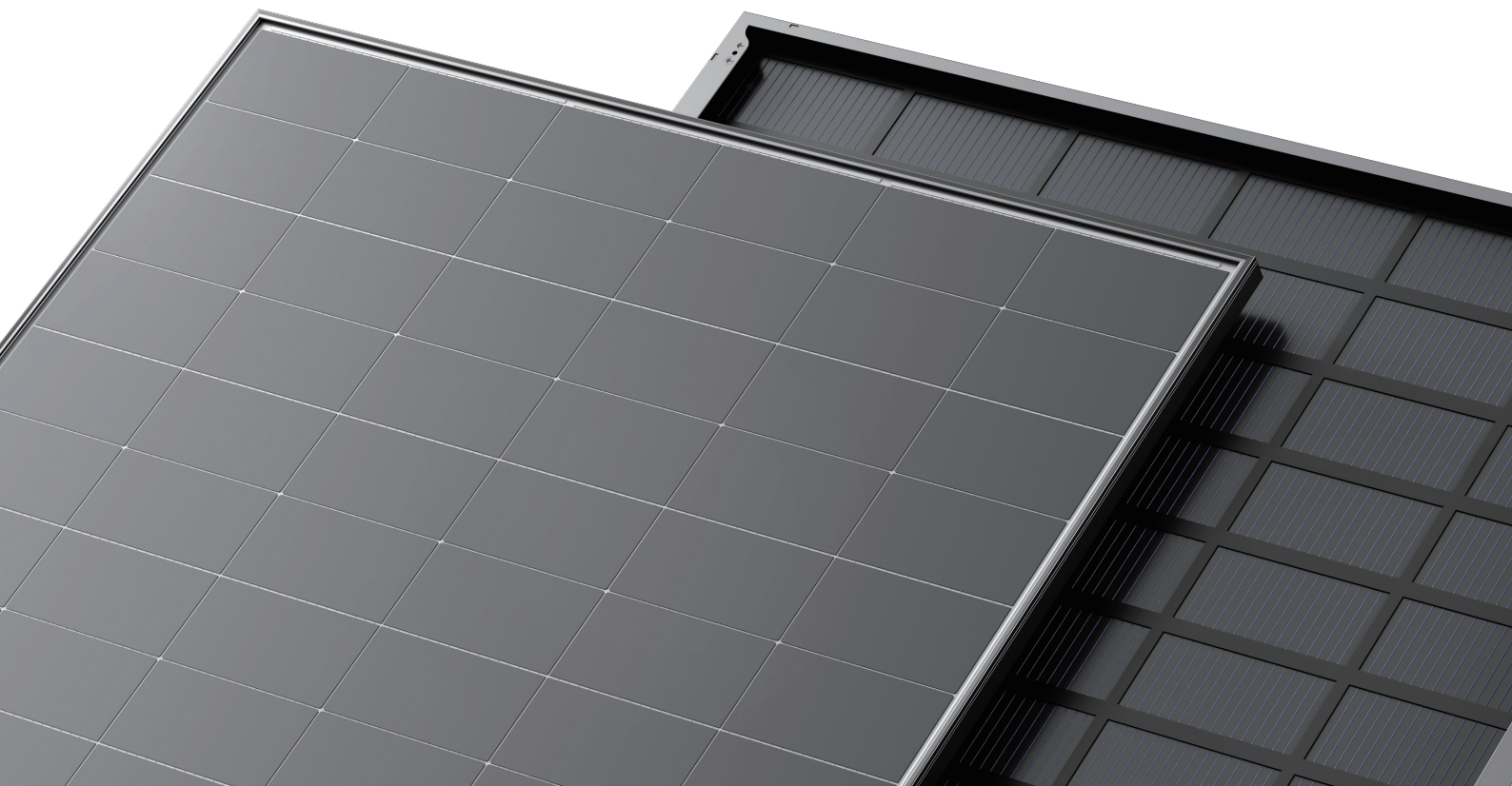


15-year Warranty for Materials and Processing



30-year Warranty for Extra Linear Power Output

THE **smarter** AWARD **E**



24.25%

MAX MODULE EFFICIENCY

0~3%

POWER TOLERANCE

1%

FIRST YEAR POWER DEGRADATION

0.35%

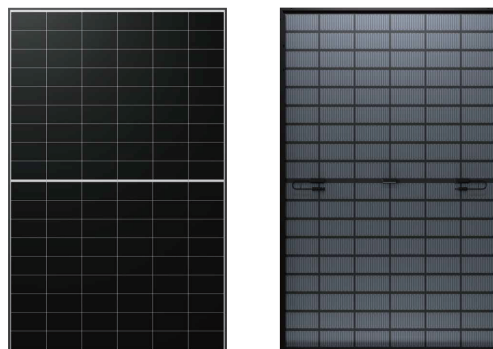
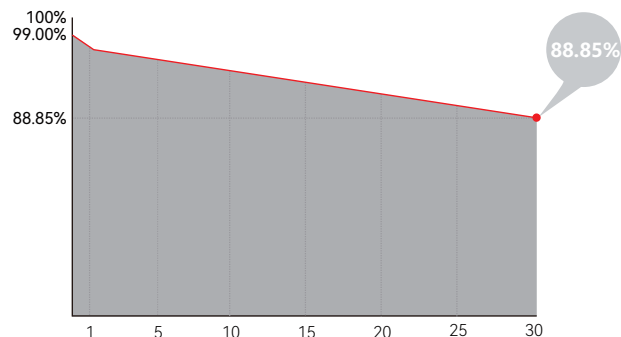
YEAR 2-30 POWER DEGRADATION

BC-CELL

LOWER OPERATING TEMPERATURE

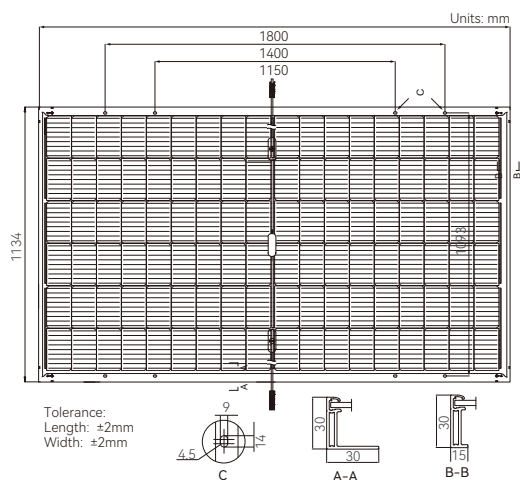
Additional Value

30-Year Power Warranty



Mechanical Parameters

Cell Orientation	108 (6×18)
Junction Box	IP68
Output Cable	4mm ² ;+400/-200mm/±1200mm length can be customized
Glass	2.0mm semi-tempered glass+1.6mm semi-tempered glass
Frame	Black anodized aluminum alloy frame
Weight	23.5 kg
Dimension	1800×1134×30mm
Packaging	36pcs per pallet / 216pcs per 20'GP / 864pcs per 40'HC



Electrical Characteristics

STC : AM1.5 1000W/m² 25°C Test uncertainty for Pmax: ±3%

Module Type	LR7-54HVD-475M	LR7-54HVD-480M	LR7-54HVD-485M	LR7-54HVD-490M	LR7-54HVD-495M
Testing Condition	STC	STC	STC	STC	STC
Maximum Power (Pmax/W)	475	480	485	490	495
Open Circuit Voltage (Voc/V)	40.42	40.53	40.64	40.75	40.86
Short Circuit Current (Isc/A)	14.88	14.98	15.08	15.18	15.28
Voltage at Maximum Power (Vmp/V)	33.40	33.51	33.62	33.73	33.84
Current at Maximum Power (Imp/A)	14.23	14.33	14.43	14.53	14.63
Module Efficiency(%)	23.27	23.52	23.76	24.01	24.25

Operating Parameters

Operational Temperature	-40°C ~ +85°C
Power Output Tolerance	0~3%
Maximum System Voltage	DC1500V (IEC)
Maximum Series Fuse Rating	30A
Nominal Operating Cell Temperature	45±2°C
Protection Class	Class II
Bifaciality	70±5%
Fire Rating	IEC Class A

Mechanical Loading

Front Side Maximum Static Loading	5400Pa
Rear Side Maximum Static Loading	2400Pa
Hailstone Test	25mm Hailstone at the speed of 23m/s

Temperature Ratings (STC)

Temperature Coefficient of Isc	+0.050%/°C
Temperature Coefficient of Voc	-0.200%/°C
Temperature Coefficient of Pmax	-0.260%/°C